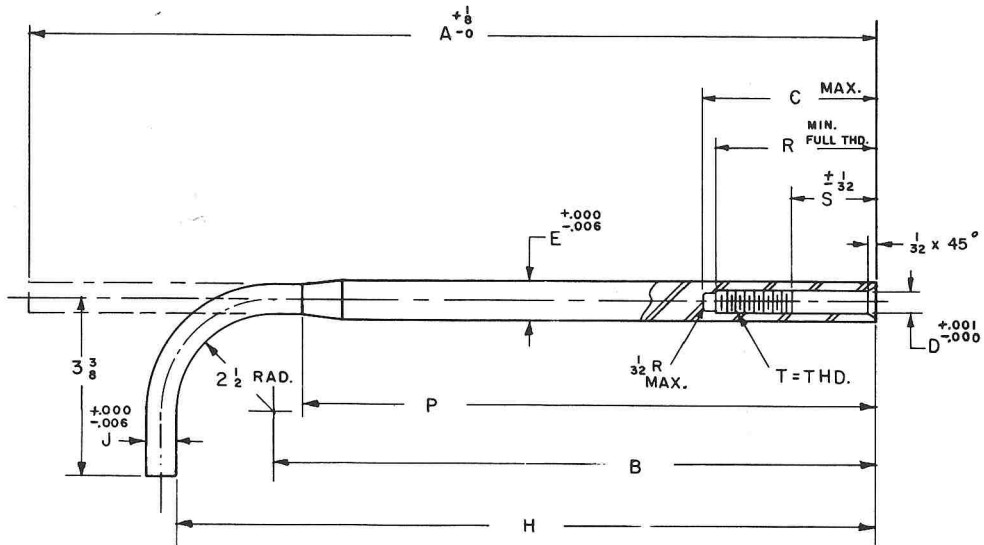


Table 44B

BENT SHANK TAPPER TAPS

Sectional Screw Type for MA-4 Nutap Tapper



GENERAL DIMENSIONS — SHANKS

Diam. of Tap Ins.	THREADS PER INCH		DIMENSIONS — INCHES										
	NC UNC	NF UNF	A	B	C	D	E	H	J	P	R	S	T (NF)
$\frac{5}{8}$	11	$17\frac{3}{4}$	$12\frac{1}{2}$	$1\frac{3}{4}$.375	.502	$14\frac{23}{32}$.406	$11\frac{23}{32}$	$1\frac{1}{2}$	$\frac{13}{16}$	$\frac{3}{8}$ -24
$\frac{5}{8}$	18	$17\frac{13}{16}$	$12\frac{3}{8}$	$1\frac{3}{4}$.375	.548	$15\frac{3}{8}$.442	$12\frac{3}{8}$	$1\frac{1}{2}$	$\frac{13}{16}$	$\frac{3}{8}$ -24
$\frac{3}{4}$	10	17	$12\frac{1}{2}$	$1\frac{3}{4}$.4375	.615	$14\frac{9}{16}$.496	$11\frac{1}{2}$	$1\frac{1}{2}$	$\frac{13}{16}$	$\frac{7}{16}$ -20
$\frac{3}{4}$	16	$17\frac{45}{64}$	$12\frac{3}{4}$	$1\frac{3}{4}$.500	.664	$15\frac{1}{4}$.535	$12\frac{1}{4}$	$1\frac{1}{2}$	$\frac{13}{16}$	$\frac{1}{2}$ -20
$\frac{7}{8}$	9	$16\frac{1}{2}$	$11\frac{1}{2}$	$1\frac{3}{4}$.5625	.726	$14\frac{1}{2}$.585	$11\frac{1}{2}$	$1\frac{1}{2}$	$\frac{13}{16}$	$\frac{9}{16}$ -18
$\frac{7}{8}$	14	$17\frac{1}{64}$	$12\frac{5}{16}$	$1\frac{3}{4}$.625	.777	$14\frac{13}{16}$.626	$11\frac{1}{2}$	$1\frac{1}{2}$	$\frac{13}{16}$	$\frac{5}{8}$ -18
1	8	$16\frac{1}{4}$	$11\frac{1}{4}$	$1\frac{3}{4}$.625	.833	$13\frac{3}{4}$.670	$10\frac{3}{4}$	$1\frac{1}{2}$	$\frac{13}{16}$	$\frac{5}{8}$ -18
1	12	$17\frac{1}{16}$	$12\frac{1}{2}$	$1\frac{3}{4}$.625	.887	$14\frac{9}{16}$.714	$11\frac{1}{2}$	$1\frac{1}{2}$	$\frac{13}{16}$	$\frac{5}{8}$ -18
$1\frac{1}{8}$	7	$14\frac{45}{64}$	$9\frac{1}{16}$	$1\frac{4}{64}$.750	.934	$12\frac{3}{16}$.751	$9\frac{3}{16}$	$1\frac{1}{2}$	$\frac{15}{16}$	$\frac{3}{4}$ -16
$1\frac{1}{8}$	12	$15\frac{29}{32}$	$10\frac{3}{8}$	$1\frac{4}{64}$.750	1.012	$13\frac{3}{8}$.814	$10\frac{3}{8}$	$1\frac{1}{2}$	$\frac{15}{16}$	$\frac{3}{4}$ -16
$1\frac{1}{4}$	7	$14\frac{47}{64}$	$9\frac{1}{16}$	$1\frac{4}{64}$.875	1.059	$12\frac{3}{16}$.851	$9\frac{3}{16}$	$1\frac{1}{2}$	$\frac{15}{16}$	$\frac{7}{8}$ -14
$1\frac{1}{4}$	12	$15\frac{15}{16}$	$10\frac{3}{8}$	$1\frac{4}{64}$.875	1.137	$13\frac{3}{8}$.914	$10\frac{3}{8}$	$1\frac{1}{2}$	$\frac{15}{16}$	$\frac{7}{8}$ -14