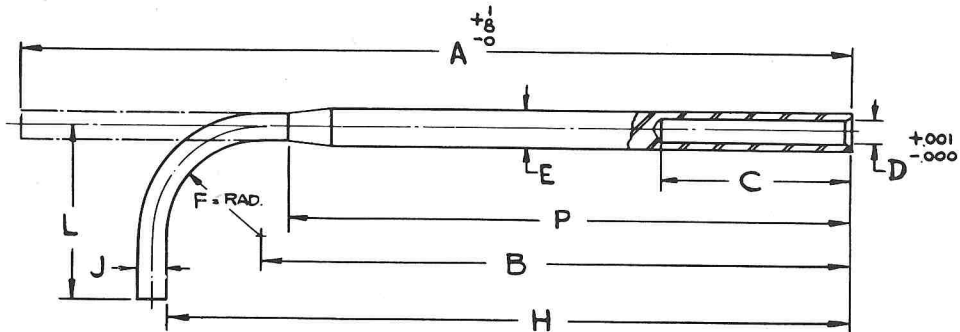


Table 44

BENT SHANK TAPPER TAPS

Sectional Solder Type for Nutap Tappers



Diameter of Shank E & J	
Range	Tolerance
To 1/2" Incl.	+.000—.005"
Over 1/2"	+.000—.006"

GENERAL DIMENSIONS — SHANKS

Size of Mach.	Diam. of Tap Ins.	THREADS PER INCH		DIMENSIONS — INCHES									
		NC UNC	NF UNF	A	B	C	D	E	F	H	J	L	P
MA-2	3/8	16	7 1/16	5 3/8	1 3/4	.2145	.289	7/8	6 1/4	.235	1 5/8	5 1/8
MA-2	3/8	24	7 5/64	5 1/32	1 3/4	.2145	.316	7/8	6 1/32	.257	1 5/8	5 13/32
MA-2	7/16	14	7 3/64	5 1/32	1 3/4	.2625	.340	7/8	6 3/32	.276	1 5/8	5 3/32
MA-2	7/16	20	7 1/16	5 3/32	1 3/4	.2625	.368	7/8	6 1/32	.298	1 5/8	5 1/32
MA-3	3/8	16	14 23/64	10 29/32	1 3/4	.2145	.289	1 25/32	12 11/16	.235	2 3/8	10 17/32
MA-3	3/8	24	14 21/32	11 1/16	1 3/4	.2145	.316	1 25/32	12 31/32	.257	2 3/8	10 13/16
MA-3	7/16	14	14 13/32	10 1/16	1 3/4	.2625	.340	1 25/32	12 23/32	.276	2 3/8	10 1/16
MA-3	7/16	20	14 4/64	11 1/4	1 3/4	.2625	.368	1 25/32	13 1/32	.298	2 3/8	10 7/8
MA-3	1/2	13	13 5/64	10 3/16	1 25/32	.309	.395	1 25/32	12 3/32	.320	2 3/8	9 15/16
MA-3	1/2	20	14 1/64	10 1/16	1 25/32	.309	.430	1 25/32	12 1/32	.348	2 3/8	10 1/16
MA-3	9/16	12	13 1/16	10 3/16	1 25/32	.344	.449	1 25/32	11 3/32	.363	2 3/8	9 9/16
MA-3	9/16	18	14 3/16	10 1/16	1 25/32	.344	.485	1 25/32	12 15/32	.392	2 3/8	10 1/16
MA-3	5/8	11	13 1/16	9 1/16	1 7/8	.405	.502	1 25/32	11 23/32	.406	2 3/8	9 1/16
MA-3	5/8	18	14 7/64	10 1/32	1 7/8	.405	.548	1 25/32	12 3/8	.442	2 3/8	10 3/32
MA-3	3/4	10	13 3/16	9 25/32	1 7/8	.467	.615	1 25/32	11 1/16	.496	2 3/8	9 13/32
MA-3	3/4	16	14 1/64	10 15/32	1 7/8	.467	.664	1 25/32	12 1/4	.535	2 3/8	10 3/32
MA-4	5/8	11	17 7/64	12 3/32	1 7/8	.405	.502	2 1/2	14 23/32	.406	3 3/8	11 23/32
MA-4	5/8	18	17 13/16	12 7/8	1 7/8	.405	.548	2 1/2	15 3/8	.442	3 3/8	12 3/8
MA-4	3/4	10	17	12 1/16	1 7/8	.467	.615	2 1/2	14 1/16	.496	3 3/8	11 1/16
MA-4	3/4	16	17 45/64	12 3/4	1 7/8	.467	.664	2 1/2	15 1/4	.535	3 3/8	12 1/4
MA-4	7/8	9	16 1/2	11 13/32	2 1/8	.528	.726	2 1/2	14 1/32	.585	3 3/8	11 1/32
MA-4	7/8	14	17 1/64	12 5/16	2 1/8	.528	.777	2 1/2	14 13/16	.626	3 3/8	11 13/16
MA-4	1	8	16 1/4	11 1/4	2 3/8	.625	.833	2 1/2	13 3/4	.670	3 3/8	10 3/4
MA-4	1	12	17 1/16	12 1/16	2 3/8	.625	.887	2 1/2	14 1/16	.714	3 3/8	11 1/16
MA-4	1 1/8	7	14 45/64	9 11/16	2 3/8	.653	.934	2 1/2	12 3/16	.751	3 3/8	9 9/16
MA-4	1 1/8	12	15 29/32	10 7/8	2 3/8	.653	1.012	2 1/2	13 3/8	.814	3 3/8	10 3/8
MA-4	1 1/4	7	14 47/64	9 1/16	2 3/8	.741	1.059	2 1/2	12 3/16	.851	3 3/8	9 9/16
MA-4	1 1/4	12	15 1/16	10 7/8	2 3/8	.741	1.137	2 1/2	13 3/8	.914	3 3/8	10 3/8

(concluded on following page)