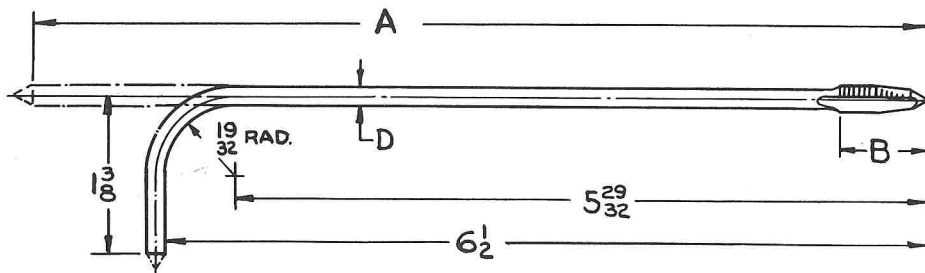


Table 42

BENT SHANK TAPPER TAPS

For MA-1 Nutap Machines—3 Flutes



GENERAL DIMENSIONS

Size of Tap	THREADS PER INCH		DIMENSIONS — INCHES		
	NC UNC	NF UNF	A	B	D
5	40	7 ²¹ / ₃₂	2 ⁹ / ₆₄	.090
5	44	7 ²¹ / ₃₂	2 ⁷ / ₆₄	.093
6	32	7 ²¹ / ₃₂	3 ⁵ / ₆₄	.095
6	40	7 ²¹ / ₃₂	1 ⁹ / ₃₂	.103
8	32	7 ²¹ / ₃₂	3 ⁷ / ₆₄	.120
8	36	7 ²¹ / ₃₂	1 ⁷ / ₃₂	.125
10	24	7 ²¹ / ₃₂	3 ³ / ₄	.133
10	32	7 ²¹ / ₃₂	1 ⁹ / ₃₂	.145
12	24	7 ²¹ / ₃₂	4 ⁹ / ₆₄	.158
12	28	7 ²¹ / ₃₂	1 ¹¹ / ₁₆	.165
1/4	20*	7 ⁴³ / ₆₄	2 ⁹ / ₃₂	.180
1/4	28	7 ⁴³ / ₆₄	2 ³ / ₃₂	.199

*Recommended for thin nuts only.

TOLERANCES

ELEMENT	RANGE	DIRECTION	TOLERANCE
Length Overall — A	No. 5 — 1/4" Incl.	Plus	1/6"
Length of Thread — B	No. 5 — 1/4" Incl.	Plus or Minus	3/64"
Diameter of Shank — D	No. 5 — 1/4" Incl.	Minus	.005"